

Archers Court – Sales Particulars

Apartment 23 | £325,000



Property Information

Address	ARCHERS COURT Apartment 23, Elmside Walk, Hitchin, Hertfordshire, SG5 1HB
Price	£325,000 (other weekly and deferred charges apply)
Tenure	Leasehold
Bedrooms	2
Floor	Second
View	Front Facing
Features & Appliances	Master Bedroom & Second Bedroom Lounge/dining area Modern fitted kitchen with an oven, hob, fridge/freezer, dishwasher and washer/dryer machine Level-access shower Specialist flooring in kitchen and bathroom to reduce slip hazards Raised power points Security optical door viewer 24-hour emergency call system
Lease	The lease offered is a Non-Guaranteed Buy Back Lease with the remaining years left from the 125 year term granted on 1st January 2012.

MHA Head Office: Epworth House, Stuart Street, Derby, DE1 2EQ.

MHA Head Office Phone: 01332 296200 | **MHA Email:** enquiries@mha.org.uk | **MHA Website:** www.mha.org.uk

Registered as a charity – No. 1083995 Company Limited by Guarantee – No. 4043124

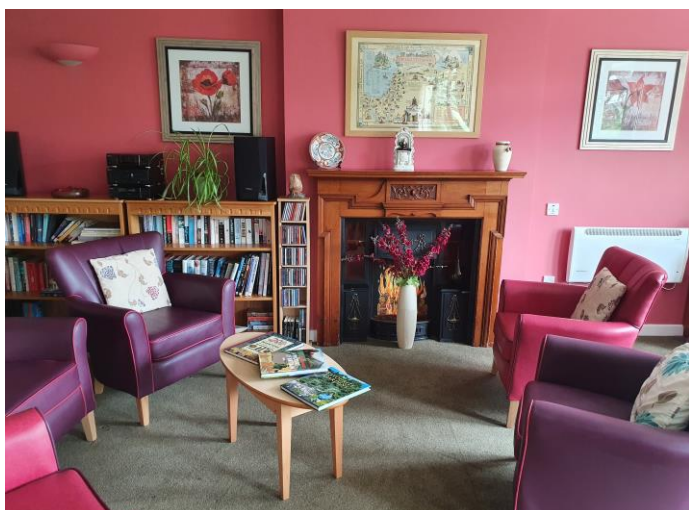
Archers Court – Sales Particulars

Apartment 23 | £325,000



Scheme Information

Description & Location	Archers Court is a purpose-built development of 24 apartments especially designed to make life comfortable for people in later life.
Facilities & Features	Buggy Store; Residents' Lounge Guest Suite



Charges & Services

Charges	Service Charge: £62.01 per week Wellbeing: £95.27 per week Ground rent: £356 per annum
Wellbeing Service	A wellbeing service is available, which includes 24-hour staffing support on site, help in any emergency as well as the organisation of an activity and events programme.
Additional Services	Additional services can be purchased to suit individuals, offering personal and domestic support. Please see the Key Facts Document(s) for information.

Disclaimer: The illustrations used within these particulars are representative only and are provided to give potential buyers an overall impression. No part of these particulars should be relied upon, when entering into a contract to purchase. Furniture is excluded from all apartments. Photography is representative only. These particulars should be read in conjunction with the Energy Performance Certificate and the Key Facts Document(s)

MHA Head Office: Epworth House, Stuart Street, Derby, DE1 2EQ.

MHA Head Office Phone: 01332 296200 | **MHA Email:** enquiries@mha.org.uk | **MHA Website:** www.mha.org.uk

Registered as a charity – No. 1083995 Company Limited by Guarantee – No. 4043124